



BRICKWORK RATINGS INDIA PVT. LTD.,

Performance of the ABS pool rated by Brickwork Ratings

September 2015

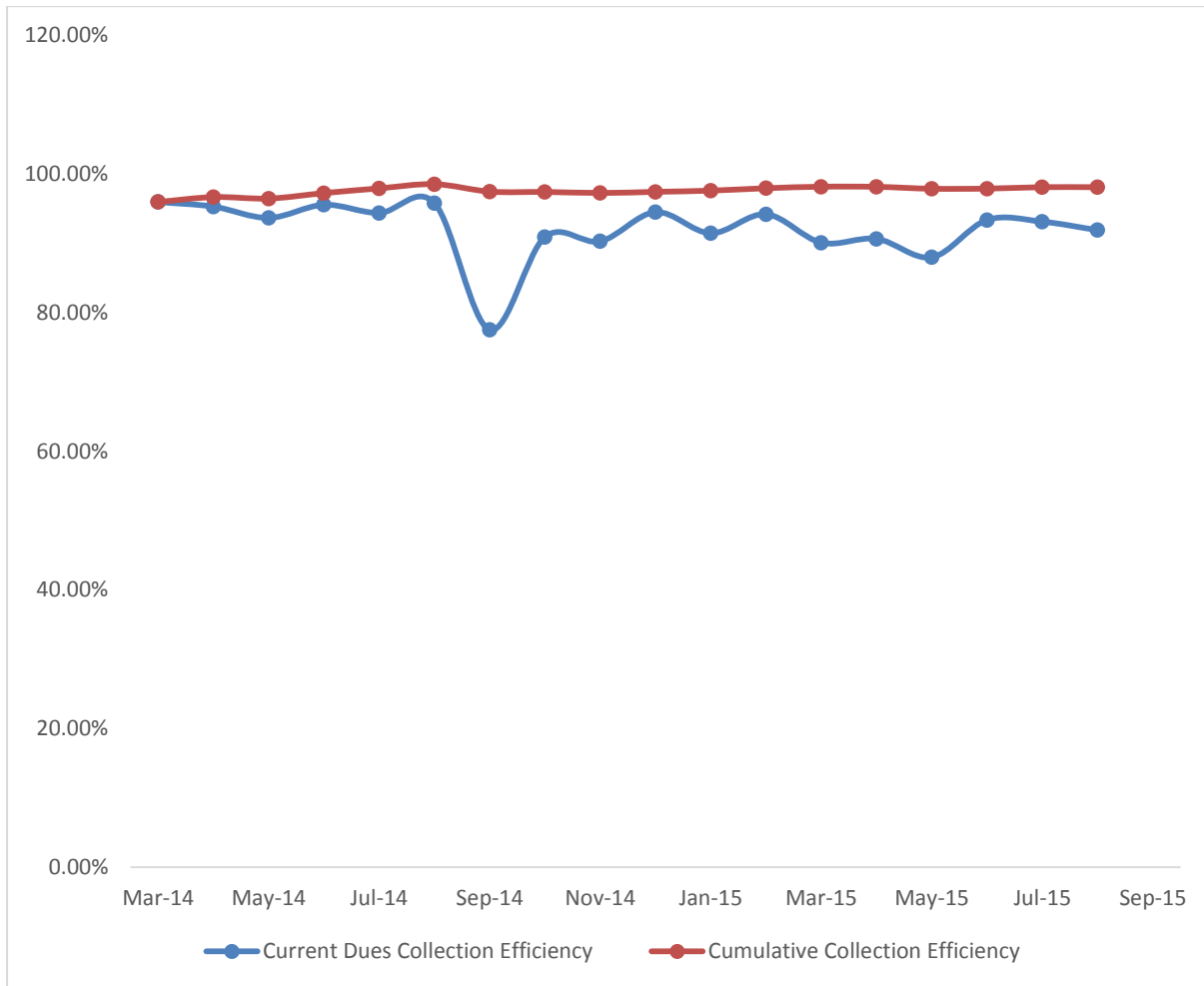
Disclaimer: Brickwork Ratings (BWR) has assigned the ratings based on the information obtained from the issuer and other reliable sources, which are deemed to be accurate. BWR has taken considerable steps to avoid any data distortion; however, it does not examine the precision or completeness of the information obtained. And hence, the information in this report is presented "as is" without any express or implied warranty of any kind. BWR does not make any representation in respect to the truth or accuracy of any such information. The rating assigned by BWR should be treated as an opinion rather than a recommendation to buy, sell or hold the rated instrument and BWR shall not be liable for any losses incurred by users from any use of this report or its contents. BWR has the right to change, suspend or withdraw the ratings at any

Executive Summary:

Brickwork Ratings has rated one securitization transaction originated by TVS Credit Services Ltd. The assets securitized in the transaction were tractor loans originated by TVS Credit Services Ltd. The performance of the rated pool up to August 2015 is summarized in this report.

1. **Collection Efficiency:** The collection efficiencies of the rated pool continued to be at stable levels averaging with cumulative collection efficiencies averaging at around 97.56%.
2. **Prepayments:** The prepayment rates increased over the last quarter, however, these are well within the scenario assumptions of Brickwork Ratings run during the initial rating analysis. The cumulative prepayment rate as of August 2015 was at 4.72%.
3. **Delinquencies:** The delinquency levels for the rated pool have been under control. 90+ delinquency rates (as a % of original Principal Outstanding) as of August 2015 stood at 0.018%, roll over ratios for accounts from 30+ to 60+ buckets have increased on an overall basis for August 2015, however, management of accounts through follow up by the originator has helped in keeping the 90+ levels low.
4. **Credit Enhancement:** There has been no drawdown in the credit enhancement provided for the rated pool; as of August 2015, the available cash collateral as a % of the remaining total investor payout was 47%.

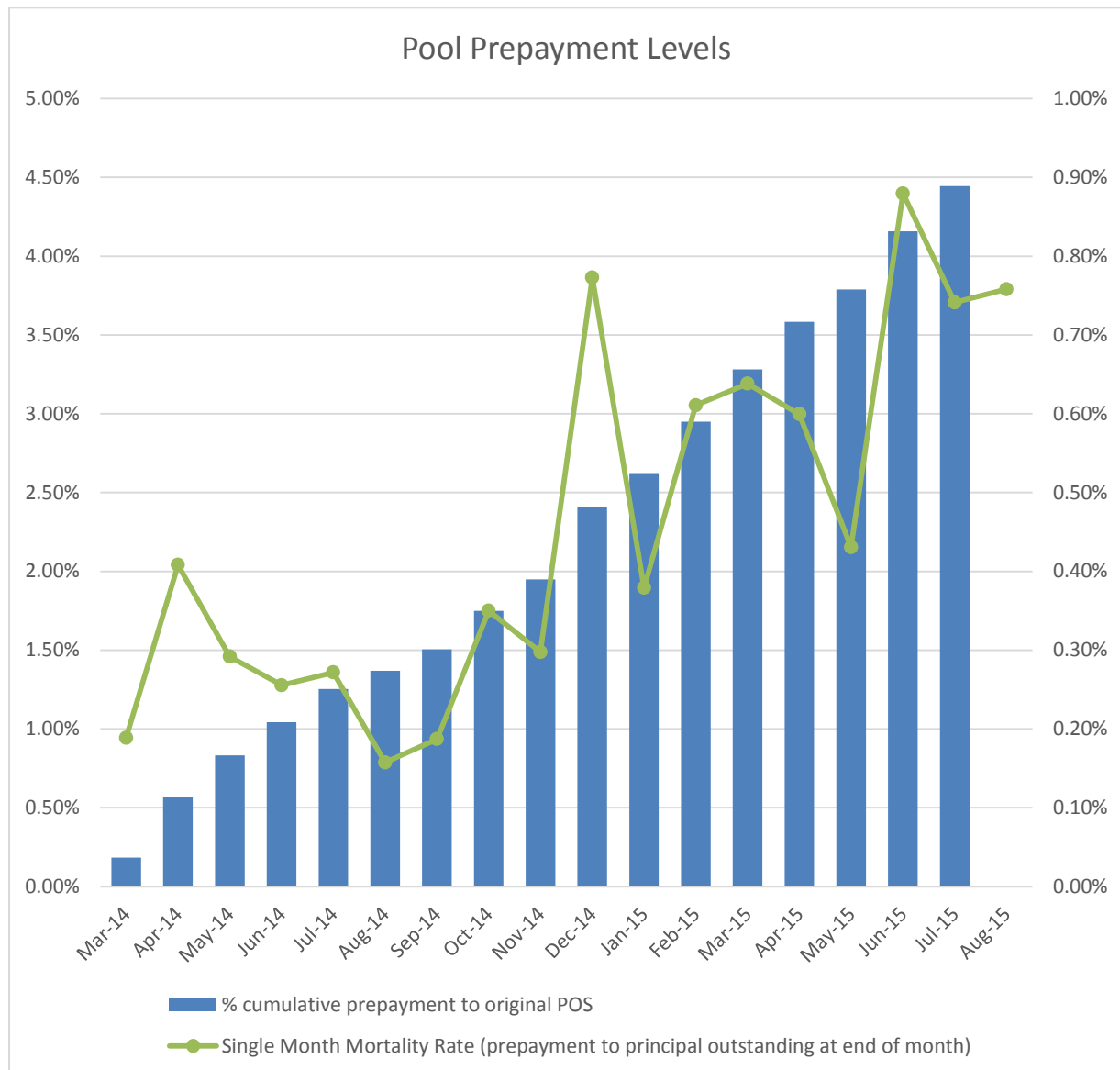
1. Collection Efficiencies:



Current dues collection efficiencies which showed a decline in September 2014, have since then averaged around 92.03%. Cumulative collection efficiency levels continue to remain strong (averaging at 97.56%); as a result there has been no draw down in the cash collateral provided as a credit enhancement for the pool.

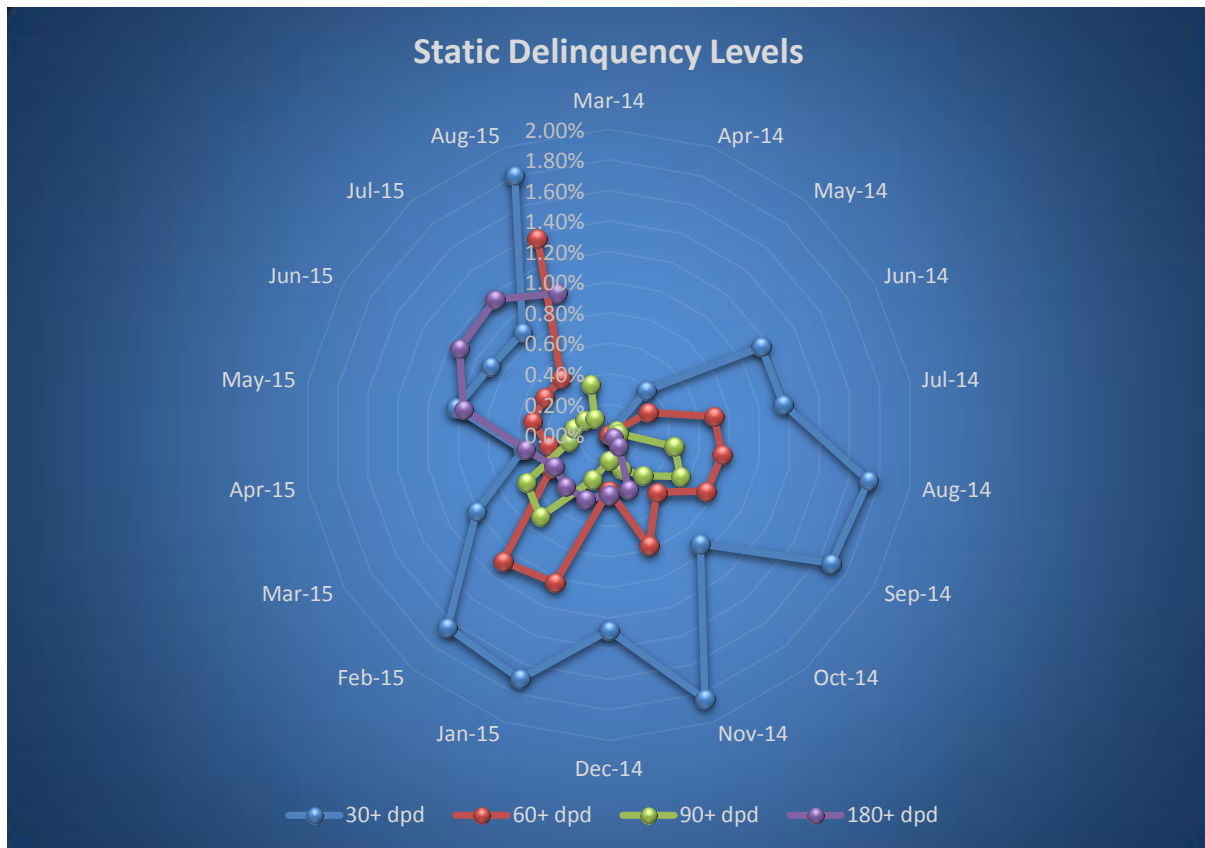
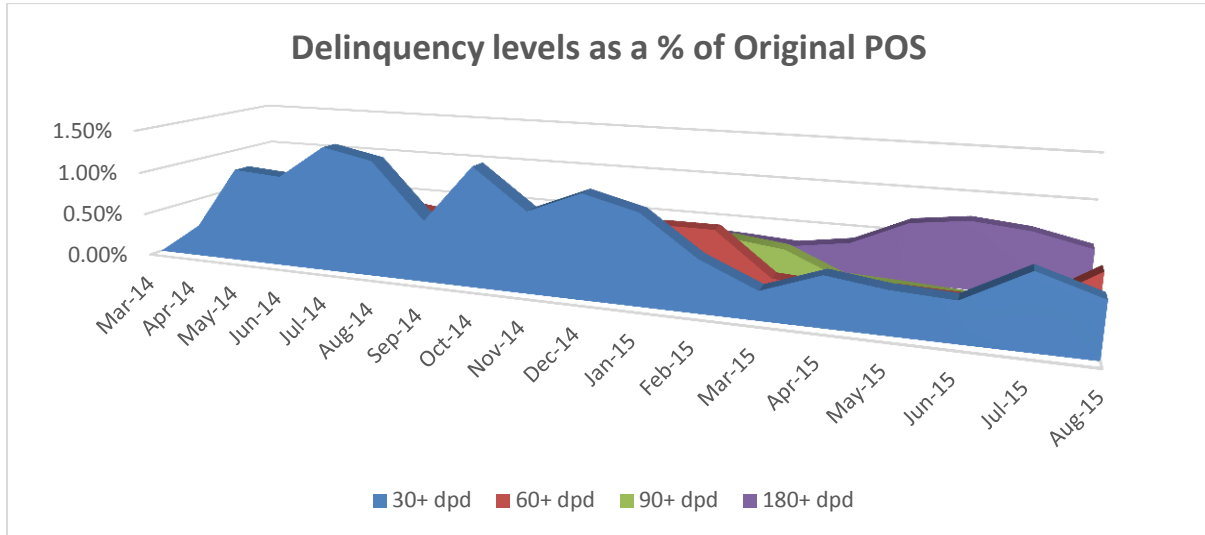
2. Prepayment Rates:

The cumulative prepayment rate for August 2015 was at 4.72% of the original principal outstanding. The annual conditional prepayment rate averaged around 5.31% (up from 4.07% in February 2015), with single mortality rates rising over the last few months. The increase in prepayment rates is reflective of the behavior of accounts with a seasoning of 15 months to 35 months and the same has already been considered in the scenario analysis done at the time of initial rating of the pool.



3. Delinquency Levels:

Dynamic delinquency levels for the 90+ bucket as of August 2015 stood at 0.48%. Overall delinquency levels as a % of original principal outstanding stood 2.04%.



Static delinquency levels have risen for the 30+ and 60+ levels in August 2015, showing both the seasoning of the accounts as well as overall seasonality related to such loans (tractors). Roll over of accounts into the 90+ category has been well within control with recovery efforts concentrated when accounts reach the 60+ buckets. However, roll over of accounts post 90+ dpd has been high and this is reflected in the higher 180+ dpd bucket rate; overall despite this increase, the levels are well within the assumptions used by BWR during the initial rating process.

4. Credit Enhancement:

There has been no utilization of the credit enhancement provided by the Originator for the transaction. Credit Enhancement as a % of the pending investor payouts as of August 2015 stood at 47% and as a % of principal outstanding was at 56.01% (up from 20% of the principal outstanding at the time of securitization).

Annexure I: Pool Level Information

Trust Name	TVSCSL MARCH 2014
Originator	TVS Credit Services Ltd.
Trustee	IDBI Trusteeship Services Ltd
Asset Class	Tractor Loans
Structure	Par
Pool Cut Off Date	28th February 2014
Pool Securitization Date	31-Mar-14
Original Principal Outstanding (Rs.)	593896074.00
Original Rating Assigned	BWR AAA(SO) (Outlook: Stable)

Pool Performance	March 2014(Initial)	August 2015(Collection Month)
Number of Contracts in Pool(beginning of the Period)	2751	2467
Balance Tenure (Months)	52	34
Pool Amortization	0%	63.69%
Credit Enhancement (CE) - Cash Collateral Available (Rs.)	118779215	118779215
CE as a % of Investor Payouts	17.84%	47%
CE as a % of Principal Outstanding	20%	56.01%
Cumulative Prepayment as a % of Original Principal Outstanding	NA	4.72%
Annual Conditional Prepayment Rate	NA	8.73%

Delinquency Levels(as a % Original POS)	March 2014(Initial)	August 2015
Normal	100.00%	97.96%
30+	0.00%	0.57%
60+	0.00%	0.66%
90+	0.00%	0.18%
120+	0.00%	0.04%
180+	0.00%	0.56%

Annexure II: Glossary of Terms Used

Term	Definition
Originator	The bank or financial institution which is the seller of assets that have been securitized
Pool Cut Off Date	The date on which the contracts were deemed to have been transferred to the investor; this could be a date prior to the date of the transaction
Pool Securitization Date	The date on which the contract is signed between the Trustee, Originator and the Investor
Original Principal Outstanding	The principal outstanding of all the contracts at the time of securitization
Number of contracts	The number of contracts at the beginning of the month for which data is provided
Structure	The structure of the transaction is par if the pool is sold at an amount equal to the principal outstanding at the time of securitization and premium if it is sold at an amount higher the principal outstanding. In case of any other specific feature of the transaction, the same will be highlighted.
Amortization	The principal outstanding at the end of the period as a % of the original principal outstanding
Balance Tenure	The number of months remaining for pool maturity
Current Demand/Dues Collection Efficiency	The percentage of amount collected during the time period based on the amount billed during the time period without considering overdues. This does not include prepayments.
Overdue Collection Efficiency	The percentage of overdue amount collected during the time period to the overdue amount billed during the time period. This does not include prepayments.
Cumulative Collection Efficiency	The percentage of total amount collected to date based on the total amount billed to date. This does not include prepayments.
Cumulative Prepayment Rate	The percentage of total amount prepaid as compared to the Original Principal Outstanding
Annual Conditional Prepayment Rate	The annual conditional prepayment rate is calculated based on the monthly prepayment rates observed as a % of the Principal Outstanding at the beginning of the month. Annual Conditional Prepayment Rate = $1 - (1 - \text{Monthly Prepayment Rate})^{12}$
Delinquency Levels	Delinquency levels are calculated based on the sum of the principal outstanding for contracts (based on 30+, 60+, 90+ etc. buckets) to the total principal outstanding. The denominator can be Original Principal Outstanding/Remaining Principal Outstanding at end of the period(also referred to as Dynamic Delinquencies)
Static Delinquency Levels	Static delinquency levels are calculated considering the principal outstanding based on the delinquency bucket. For e.g., if the delinquency rate for 30+ days is considered, the principal outstanding as of 30 days earlier is considered. Similarly, the static delinquency levels for 60+ buckets are calculated based on the principal outstanding as of 60 days earlier.

Contact

Analysts: analyst@brickworkratings.com

Media: media@brickworkratings.com

Phone: 1-860-425-2742